

Donate now!



Naturefriends Climate Fund

Your contribution to Climate Justice

This table can serve as orientation to calculate the amount of your personal contribution to compensate for greenhouse gas emissions caused by plane trips. For reasons of simplicity, four categories are suggested.

Category	Distance (round trip) about ...	Example	Contribution
Europe*	2.800 km	Vienna – London, Berlin – Paris, Brussels – Rom	20 €
Medium haul	9.500 km	Europe – Senegal/ Togo, Europe – Canary Islands	68 €
Transcontinental 1	14.500 km	Europe – South Africa, Europe – New York City	105 €
Transkontinental 2	34.000 km	Europe – South America, Europe – Australia	245 €

* For journeys of less than 800 kilometres (per trip), plane trips ought to be avoided if possible.

For car trips, the amount of 5 euros per 1,000 kilometres and vehicle is suggested.



Further information and online payments:

www.climatefund.nf-int.org

Contact:

Naturefriends International
Diefenbachgasse 36 | 1150 Vienna
+ 43 1 8923877
andrea.lichtenecker@nf-int.org
www.nf-int.org

Bank account:

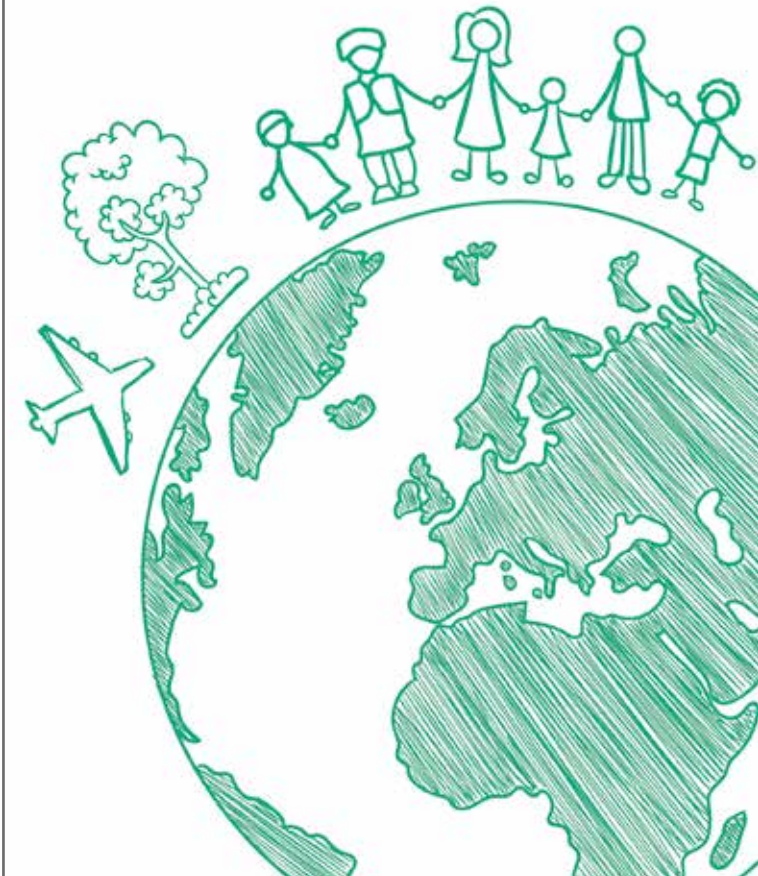
Naturfreunde Internationale
IBAN: AT 88 14000 05610 665 499
BIC: BAWAATWW

Payment reference: [Naturefriends Climate Fund](#)

Imprint:

Publisher: Naturefriends International | Editor: Christian Wagner
| Text: Andrea Lichtenecker | Photos: Archiv NFI, Naturfreunde
Senegal, Naturfreunde Togo | Graphic: Hilde Matouschek, officina |
Print: gugler GmbH, Melk; UWZ 609; www.gugler.at | 2/2017

YOUR CONTRIBUTION TO CLIMATE JUSTICE!



www.climatefund.nf-int.org

Living Solidarity!

The Naturefriends Climate Fund

Air traffic plays a key role in climate change! Climate change has a dramatic impact on ecosystems and biodiversity - thus, on the lives of people - which is already visible in many parts of the world. It especially affects countries of the Global South, the population of which contributes very little to global air traffic.

The Naturefriends Climate Fund provides all Naturefriends with the opportunity of supporting climate protection projects by African Naturefriends as a compensation for trips with the plane or car - and thus of contributing personally to more climate justice. The amount of the payments is based on the greenhouse gas emissions caused by the plane or car trips.

100% of the contribution payments go into specific projects of African Naturefriends. Further personal donations are welcome too, of course!

Jointly active!

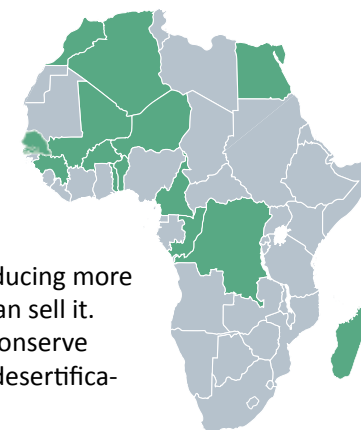
Naturefriends in Africa

Many African countries are hit especially hard by climate change. In originally dry regions - such as the Sahel zone - vital precipitation continues to decrease; at the same time, especially in poorer countries, the population often depends heavily on agriculture.

As droughts are on the rise, the rural population often loses its basis of existence and is forced to migrate to the cities. However, prospects for a better future are slim there, as well. What remains is the hope of finding a better life in Europe.

Naturefriends are active in 15 African countries and commit themselves to supporting a sustainable development. The focus of their activities is on specific measures against the consequences of climate change. These measures are implemented together with the local population. One example is

the plantation of fruit trees, which improve the living conditions in villages in several ways: the fruit can be used by the families themselves; when producing more than they need, they can sell it. And the trees help to conserve valuable soil and stop desertification.



Many projects are implemented in the framework of North-South partnerships with European Naturefriends. The partners have the possibility of networking, supporting each other and learning from one another. Journeys to African countries enable Naturefriends to get to know each other.

